

Kensington Professional Center, LLC

411 E Business Center Dr.
Mount Prospect, IL 60056

This building is strategically located in the Kensington Business Park in Mount Prospect, IL. The asset is located just three minutes from Randhurst Mall, 15 minutes from O'Hare Airport and less than 30 minutes from downtown Chicago.



This well-maintained, fully-sprinklered, ADA compliant 1980 masonry brick with glass veneer construction offers tenants individually controlled temperature settings, private entrances and above average 4.20 per 1,000-square foot parking ratio, as well as access to miles of walking trails in the nearby Kensington Business Park Trails.

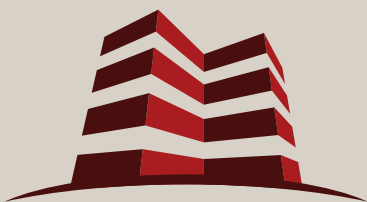


Nearby corporate users include: Metropolitan Life, Cummins Allison, CVS Caremark, Sumitomo Electric, Siemens, and Comcast

For over twenty years, Moats Office Properties has owned and operated office buildings in Chicago's Northwest Suburbs. We are a family owned and operated business and strive for the best in customer satisfaction.



Scan the QR Code to
visit our website:
www.MoatsOffice.com
Thank You!

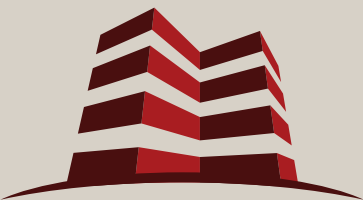
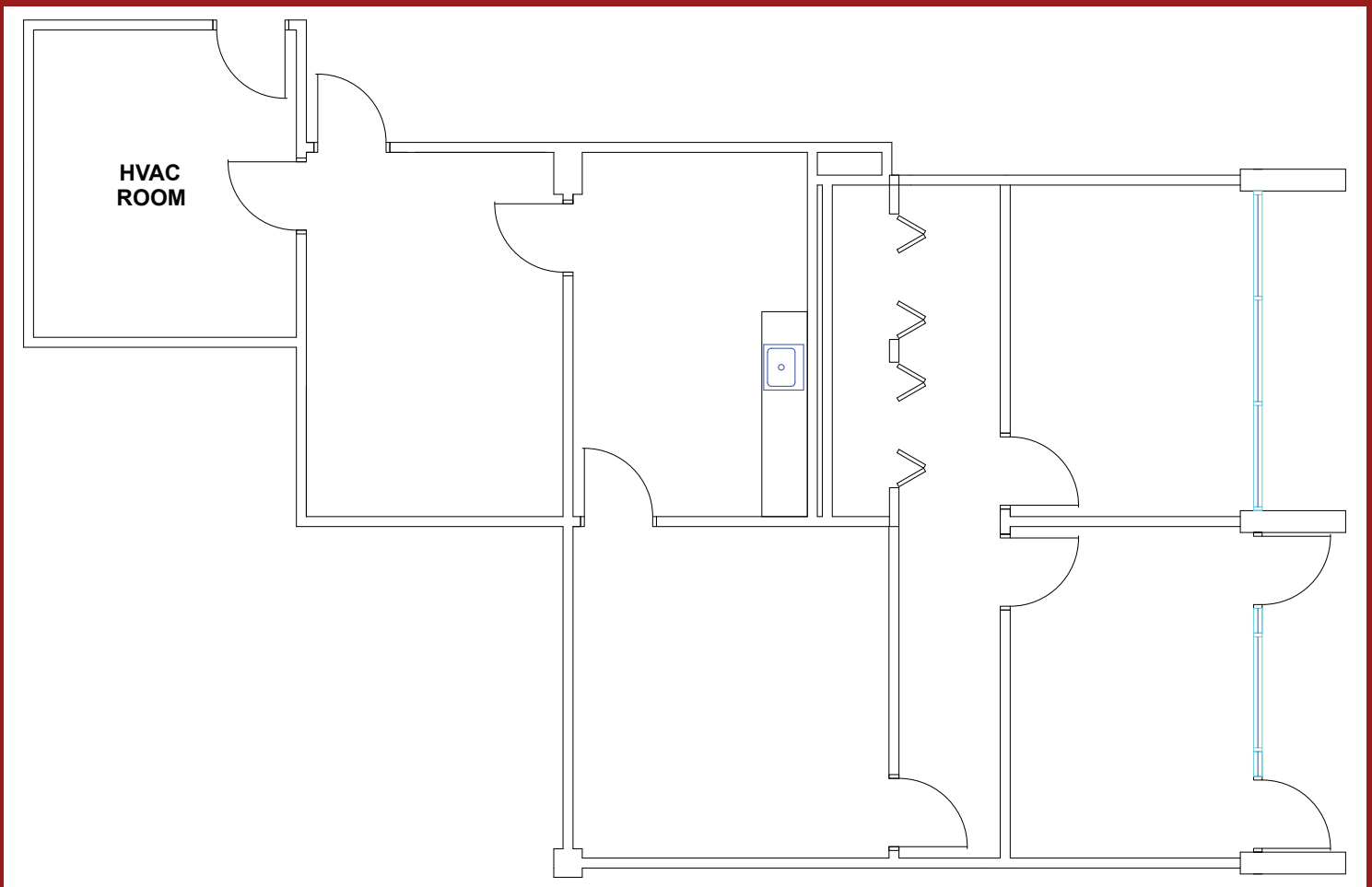


MOATS
OFFICE PROPERTIES

Office: 847 359 - 2121
Cell: 847 363 - 9700
www.MoatsOffice.com

Kensington Professional Center, LLC
411 E Business Center Dr.
Mount Prospect, IL 60056

1,177 Rentable Square Feet

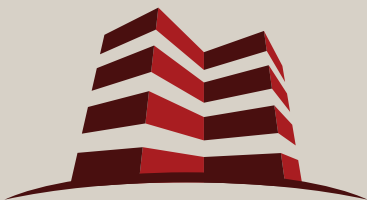
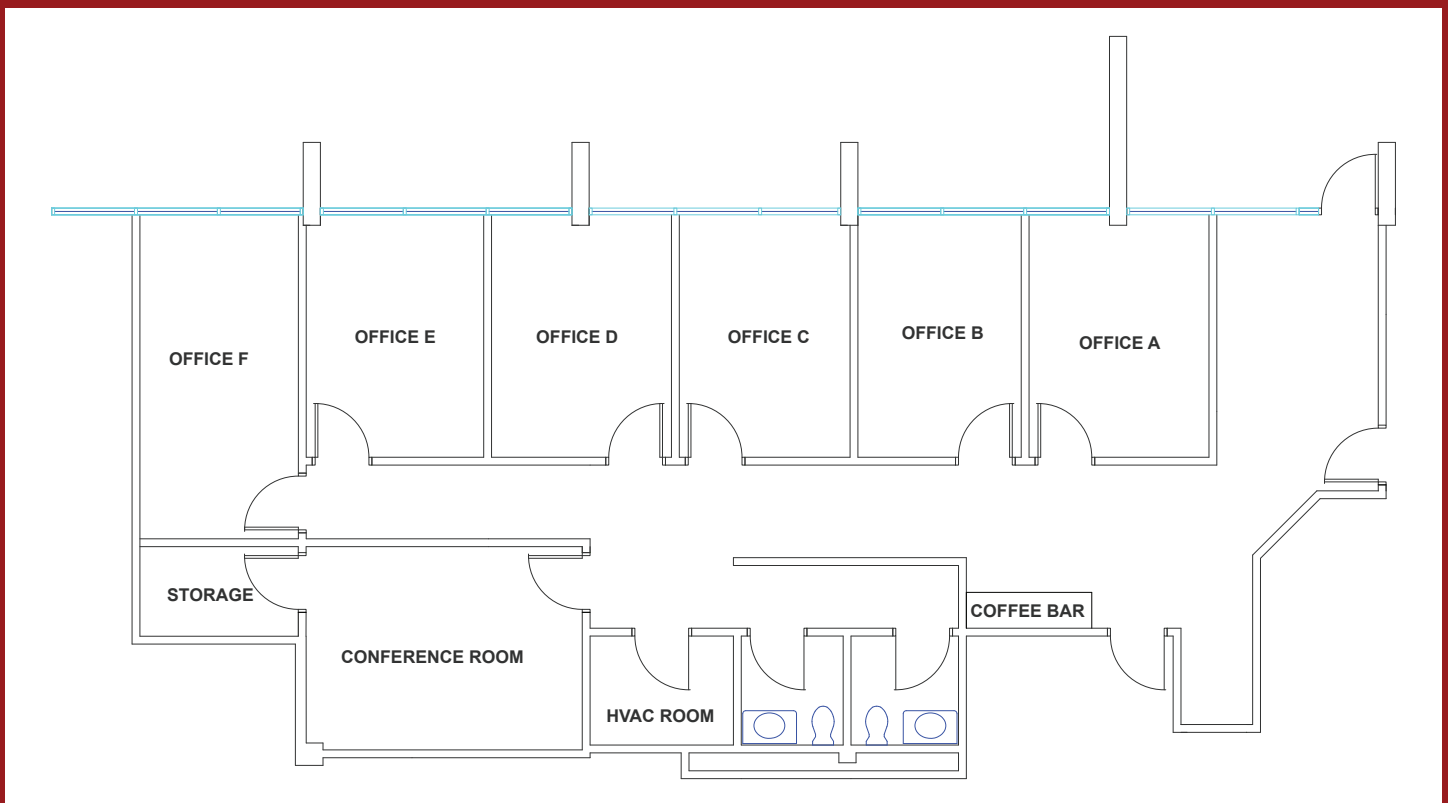


MOATS
OFFICE PROPERTIES

Office: 847 359 - 2121
Cell: 847 363 - 9700
www.MoatsOffice.com

Kensington Professional Center, LLC
411 E Business Center Dr.
Mount Prospect, IL 60056

Suite 113 1,902 Rentable Square Feet
[Divisible to 250 Rentable Square Feet]

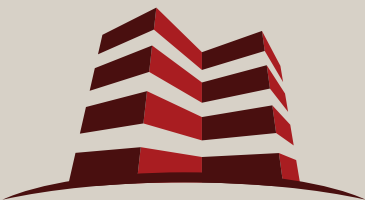
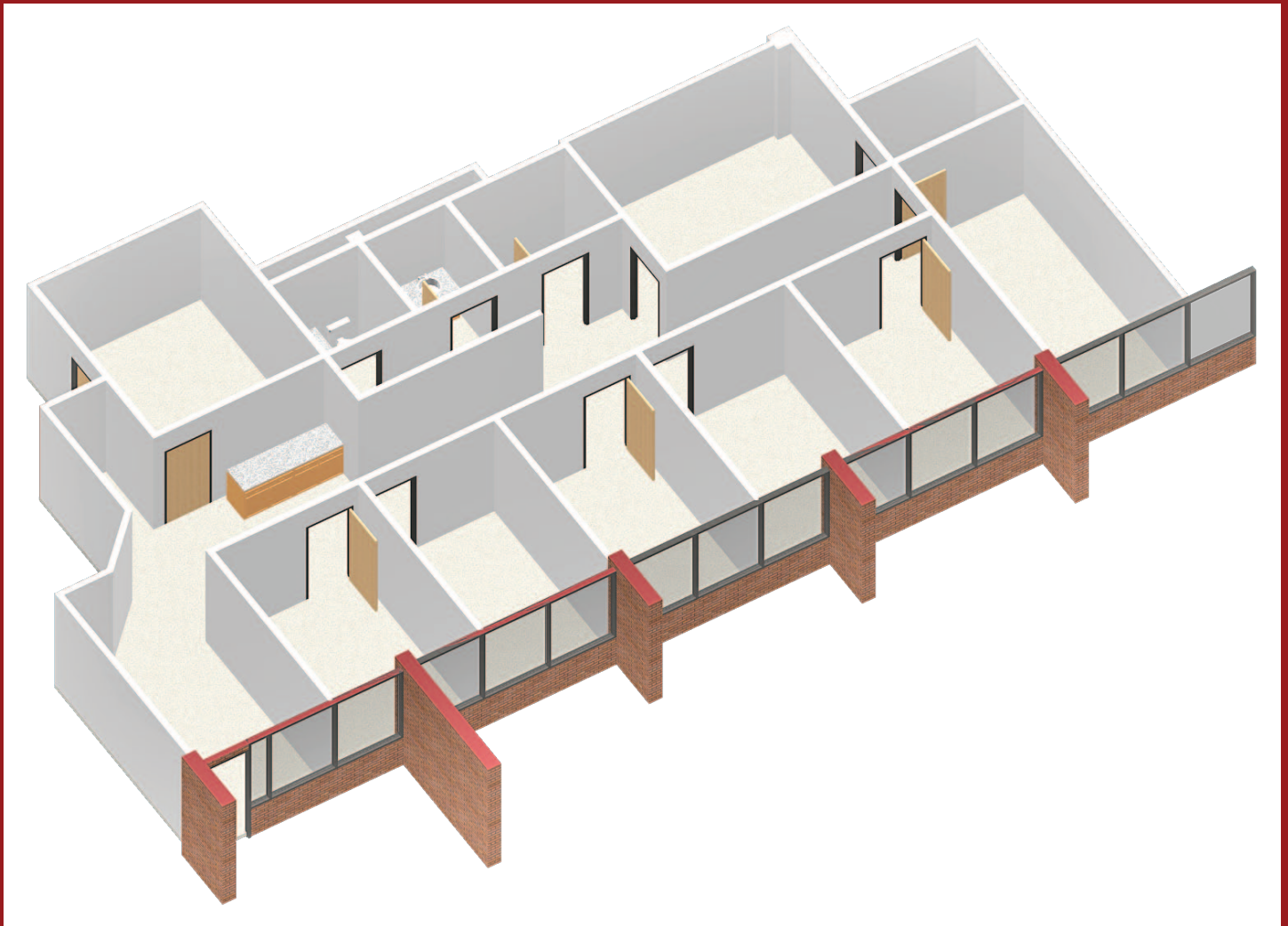


MOATS
OFFICE PROPERTIES

Office: 847 359 - 2121
Cell: 847 363 - 9700
www.MoatsOffice.com

Kensington Professional Center, LLC
411 E Business Center Dr.
Mount Prospect, IL 60056

Suite 113 1,902 Rentable Square Feet
[Divisible to 250 Rentable Square Feet]



MOATS
OFFICE PROPERTIES

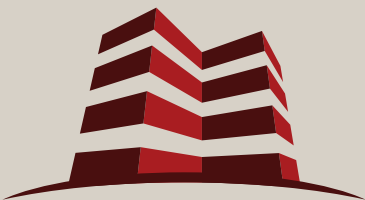
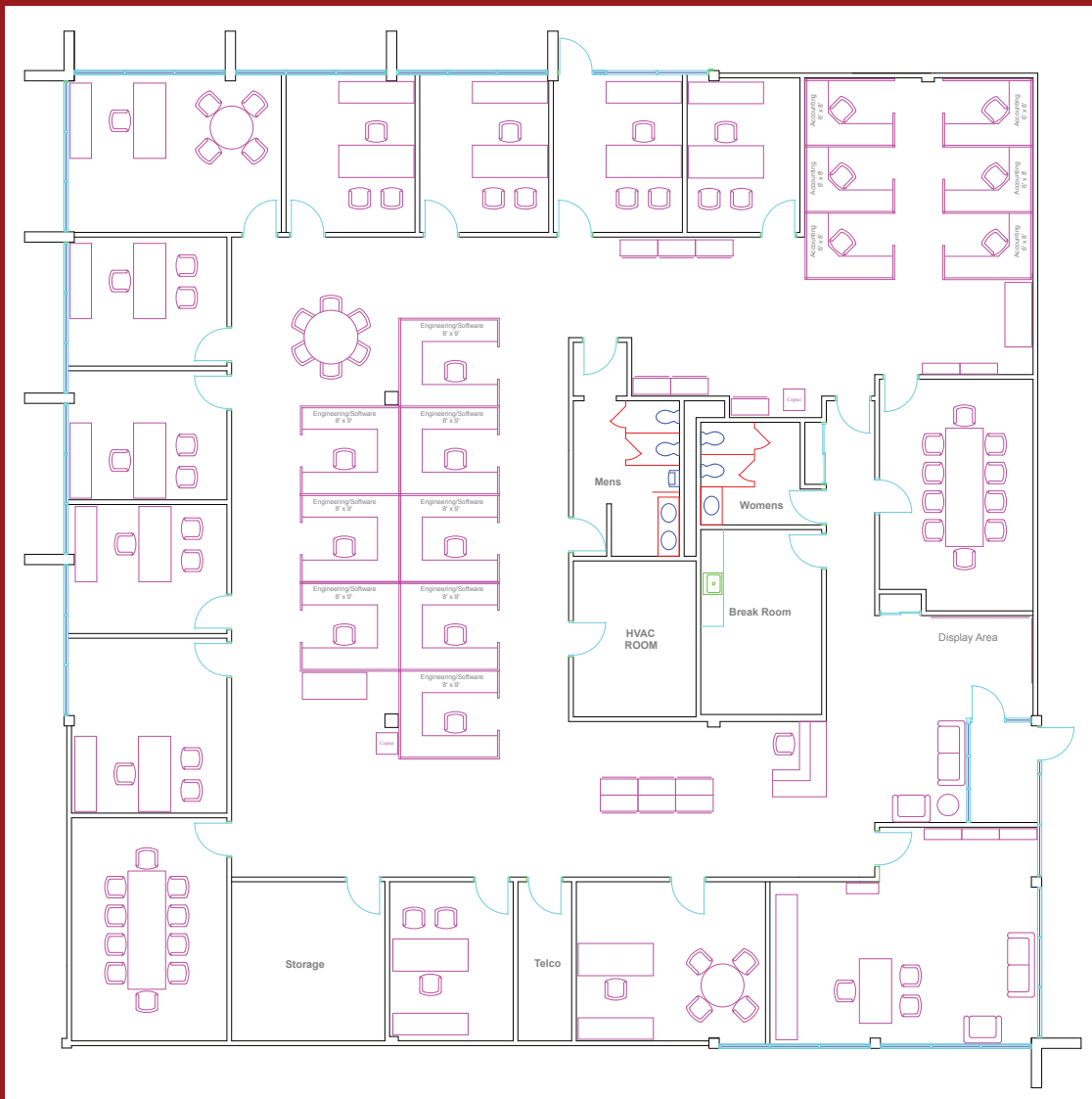
Office: 847 359 - 2121
Cell: 847 363 - 9700
www.MoatsOffice.com

Kensington Professional Center, LLC

411 E Business Center Dr.
Mount Prospect, IL 60056

Suite 104

8,220 Rentable Square Feet



MOATS
OFFICE PROPERTIES

Office: 847 359 - 2121
Cell: 847 363 - 9700
www.MoatsOffice.com